

# Solar's simply super

## The living's cool in the Hefele house



HIGH ceilings help keep the Hefele home cool on hot summer days — and they look good too



THE kitchen in the solar house is big and airy



EVEN the tile floor in the family room plays a key role in keeping the house from over-heating

ANYBODY who does not go solar is crazy. That is the view of Mrs Lee Hefele, of Bailey Road, Wanneroo.

She and husband Egon are delighted with their home, designed by leading solar architect Gary Baverstock.

It took two years to design and build and the Hefeles are still not finished. But they're very happy with the results so far.

"The house stays at a reasonable temperature all the time," said Mrs Hefele.

"We like to live naturally without air-conditioning so solar power was the obvious way to go."

The Hefeles previously lived in what they describe as an ordinary suburban house in Doubleview.

"We got cold in the winter

By PENNY HEWETT

and hot in the summer," Mrs Hefele said.

After she and her husband decided to use Gary Baverstock's company for their house their needs and preferences were analysed.

"We were psycho-analysed," said Mrs Hefele.

"They asked us what we liked and didn't like about every room and put down everything we said on tape. Then they came up with something to suit us."

### Unusual

The house, on a 6ha property, has high ceilings, north-facing windows, skylights, insulated walls and ceiling and a solar hot-water system.

One unusual feature is the pergola at the front of the house. It has angled slats to allow in winter sun and keep out the hot summer rays.

"The designer estimated what the temperature would be in the house at different times of the year and he has been spot on," Mrs Hefele said. "It hasn't gone above 28C in summer or below 18 in winter."

The home has three bedrooms, a large family room and adjoining kitchen, lounge and dining room, bathroom and large laundry and work area.

When complete, it will have cost about \$150,000.



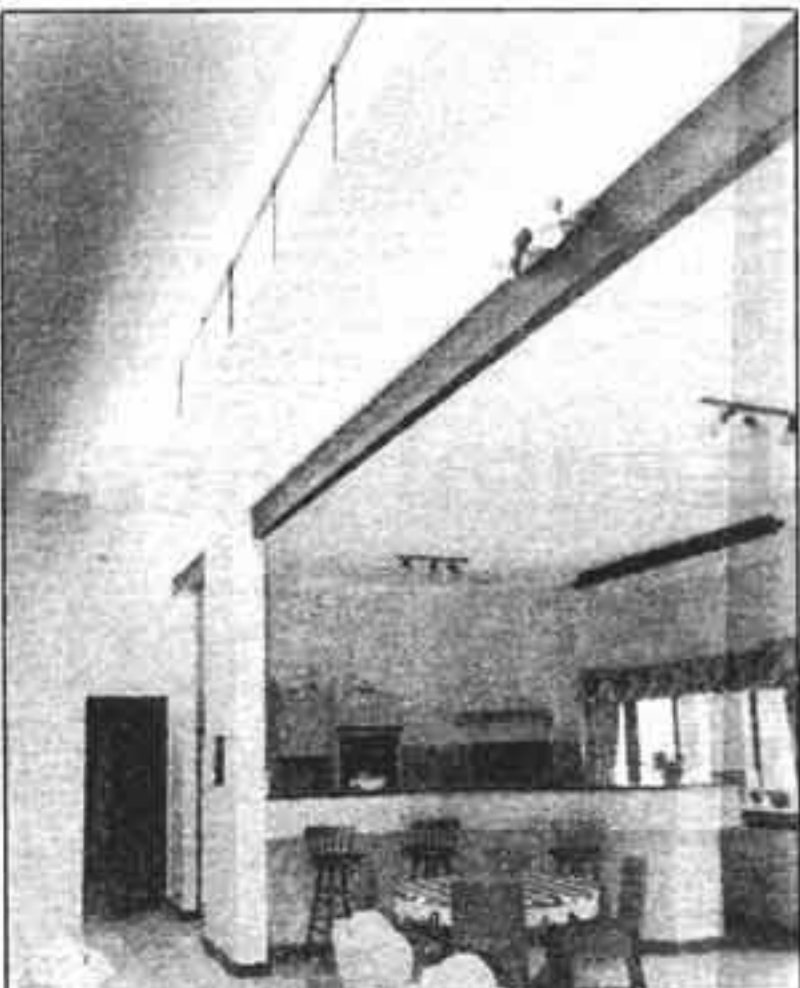
This home is based on passive solar principles.



THE walk-in pantry is vast



THE solar house windows face north and a pergola is designed to let in the winter sun and block the hot summer rays



A clerestory window creates a spacious feeling in the family room and meals area.

The solar benefits are appreciated when you open these doors and note the warmth in the foyer. Ceilings are high at 3.4m and, of course, they are insulated.

Arches define sitting and dining rooms while allowing the warmth to permeate the whole zone.

The pantry is like another kitchen with its food preparation areas. But of course the work benches do not match the splendour of those in the actual kitchen, where much is made of jarrah fascia and grab rails to well-detailed cupboards.

Mrs Hefele sees herself as "Queen of the castle" here, able to control the whole of the living spaces indoors and out. It is almost like working outdoors in a bush environment, but without the weather extremes.

The related family living room is where the owners spend most of their time, and is the most interesting space indoors. Tucked neatly into a recess is a well-equipped office.

There are three bedrooms, all with double beds. The master bedroom seems enormous and it has a corner window for the best morning outlook to the bush.

The walk-in wardrobe is so big that it rates as a dressing room, and it has glass bricks in the wall for a soft level of natural lighting. The ensuite has a big shower area, a spa bath big enough for two in a podium setting, a wide vanity cupboard with twin basins and a bidet as well as toilet.