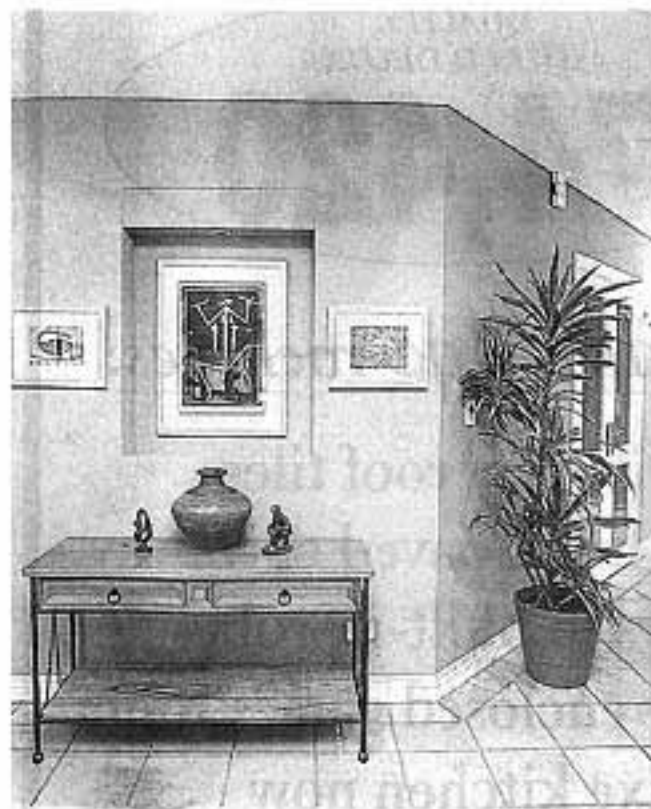


Energy-wise design meets future needs



ENVIRONMENTAL concerns dictated the planning of an imaginative, two-storey residence on a hilltop in Bicton.

Designed to a proven thermal formula, it has cut energy costs by at least 60 per cent and is maintaining a comfortable ambient temperature indoors that ranges from 18C in winter to 28C in a summer heat wave.

The owners see it as a long-term investment that can be adapted to meet the changing needs of their growing family.

Architects Baverstock Murphy and Associates created a self-contained parents' retreat on the upper floor that can include a nursery. There is a tree-top outlook all around and a balcony over the entry court exploits a valley view.

A mezzanine area maintains a visual link with the bright living spaces downstairs that have glazed walls to the north, celestary windows and a skylight that allows only the low-angled winter sun to penetrate indoors.

Of the downstairs bedrooms, one is virtually a second main suite. All are big and are in the part of the house that is cooler in summer.

The exterior is in the mediterranean style which gives it immediate harmony with most areas of Perth.

Behind a carefully retained wattle tree is a colonnaded entry court in the roman style that traps the sea breezes of summer to cross-ventilate the home.

It sets the scene from a foyer that fans out for a spectacular play on spaces and materials, and tones that are a foil for the decor.

The changes in scale help define main

spaces in the relatively open plan, where family zones visually gain in area with integrated outdoor living.

The main court area is like an outdoor room with specially angled louvres to the pergola that maximise the winter sunshine but exclude the blast of summer.

The hub of the home is the opulent kitchen with beautiful beech to extensive cupboards and work benches in an emerald pearl granite. Fittings include twin wall ovens and multi-purpose hot-plates, one working on an electromagnetic system. Trapeze, low-voltage halogen lights are suspended over the main work area.

A multi-purpose utility room is an

extension of the kitchen and has the access to the double garage.

The upstairs floor has a study, a mezzanine gallery and a big bedroom. There is a balcony that extends over the entry court. The luxury ensuite has a step-up spa.

The owners were quick to appreciate the objectives of the architects and could visualise the end results. As a precaution a gas bayonet point for a heater was installed but has never been used.

The residence is not open for inspection but details can be discussed with architect Garry Baverstock on 9474 2770.

FRANK PLATELL

