

house look

On Display

Mt Claremont

- ◆ Price: on application
- ◆ Address: Arenga Court
- ◆ Agent: Garry Baverstock, architect
Phone 474 2770
- ◆ Open: Contact architect.

NOSTALGIA for the big town houses of yesteryear, surprise at the imaginative play on living spaces and then appreciation of the indoor comfort on a hot day... these were the reactions to an environmentally-friendly, passive solar design at Mt Claremont, a concept that would earn a five-star rating for energy efficiency.

The town house look is appropriate for a big residence on a small lot, where the zero lot line and setbacks can be exploited in the sub-division.

It is two-storey in part, which contributes to the interesting sculptural effect on all elevations.

The corrugated roof is fairly steeply pitched at 30 degrees to incorporate the flush solar panels for the hot water.

In doing this there is an imaginative double-storey void in the centre of the home, where the ceiling soars to an apex about 8m up.

This all allows for maximum utilisation of the northern light to the facade, allowing the winter sun to penetrate right through the home. At the same time it is completely excluded at this time of the year.

Living areas in this design face north but also open out to the south, to a private court that caters for the alfresco lifestyle.

Windows to the south can be opened to allow the Fremantle doctor to cross-ventilate the house in summer.

The imaginative play on indoor spaces exploits a multi-angled, sculptural core which accommodates the pantry and general storage space.

It also supports a bridge linking the parents' private lounge upstairs with their main bedroom suite and, being finished in an ochre tone, harmonises with the natural timber finishes indoors.

There is an even ambience of light, giving a bright airy feeling to living zones, upstairs and down.

It is not obvious at any point that the residence has been designed for a high degree of thermal efficiency.

But it has all been planned to keep the internal temperature below 28C in summer, even when it is 40C-plus outdoors, and not drop below a comfortable 18C in winter, even if frost is on the ground.

The brief to architect Garry Baverstock, of Baverstock Murphy and Associates, was for a private retreat where the owners could escape from a busy practice, entertain their friends and family in some style and have overnight accommodation for them when needed.

They liked the town houses of Fremantle and wanted to maximise development on their site of about 400sqm. Comfort and energy efficiency were paramount, hence the passive solar design.

The house really turns its back on Arenga Court and uses a pyramid-roofed double carport to add to the overall privacy from passing traffic.

The main entry is into a foyer with the stairway and convenient is the kitchen with adjoining family spaces, plus the overnight accommodation for occasional visitors.

There is a luxury look to the kitchen with the polished granite tops to about 9m of bench cupboards and a natural timber finish to the doors. Fittings include a circular inset sink with flick control tap, gas hotplates with wok burner and a multi-purpose, underbench oven.

The cushioned parquet floor adds to the warmth indoors and it is in harmony with the ornate, natural timber surround to a fireplace that has a gas-fired, simulated coal grate. The family areas extend overall for about 9m.

Offset is the dining room with classical tile floor, and ample space for a table setting of eight.

The stairway with its fluted timber spindles to the balustrade leads up to the parents' private sitting room upstairs, and the bridge links in their main bedroom suite.

The sitting area is about 6m x 4m and seems even bigger with the full-width balcony to the south and a smaller outdoor sitting area to the front.

This front balcony is cantilevered out to take in a view across a wide expanse of treetops to the city skyline.

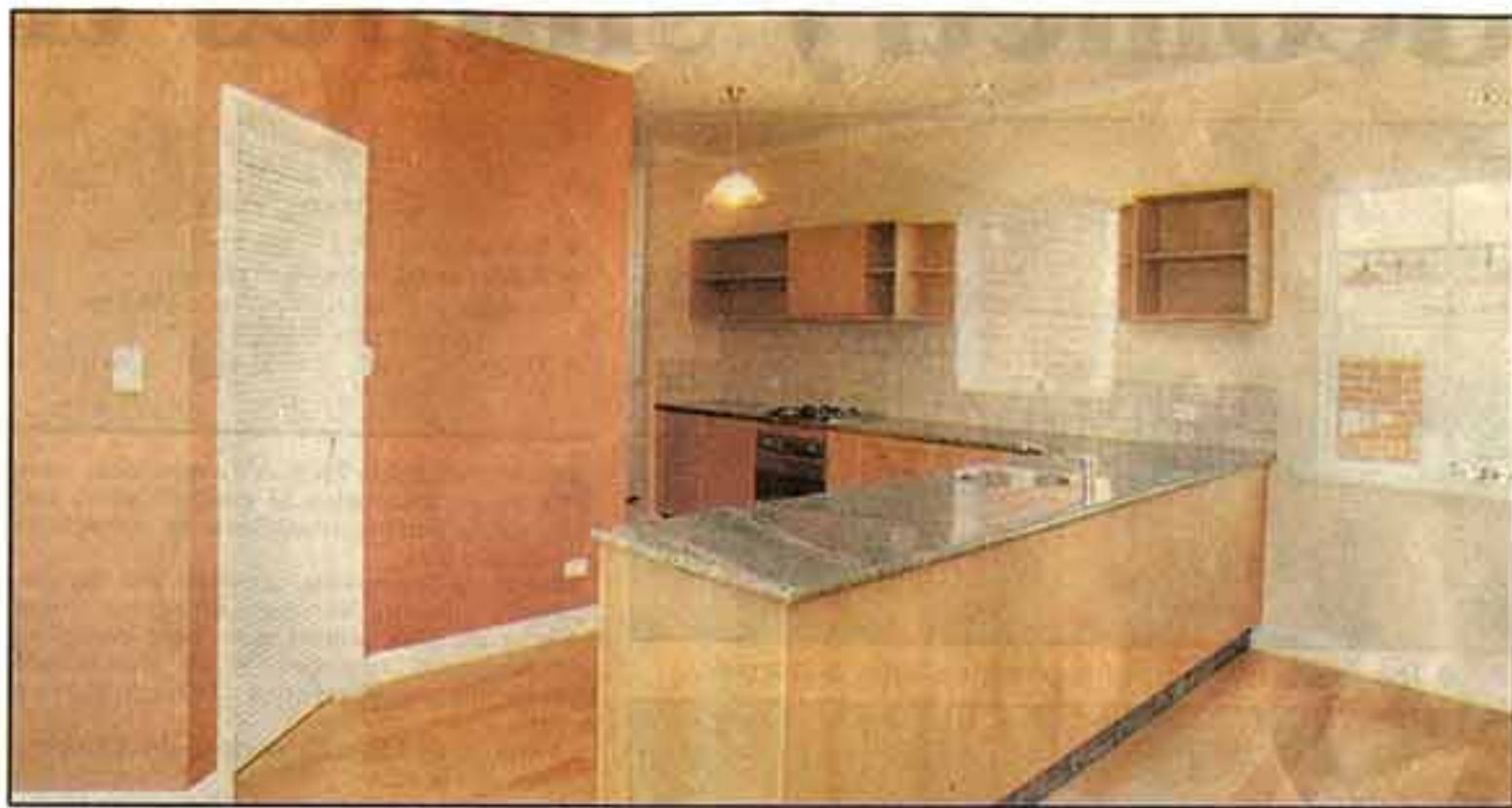
The raked ceiling in the sitting area reaches up 5m to the apex.

The main suite has a big bedroom, a well-appointed, walk-in wardrobe and a bathroom that features the old-style, claw-and-ball bath plus a pedestal hand basin, separate from a vanity cupboard.

The house is not open for inspection but can be seen by appointment with the architect.

Frank Platell

◆ RIGHT: The kitchen continues the angled look and comes with a walk-in pantry set into one wall.



A big town



◆ ABOVE: The two-storey house is an impressive mixture of angles and corners.
◆ TOP RIGHT: The angles are continued inside.
◆ RIGHT: An old-fashioned clawfoot bath is a bathroom feature.

