

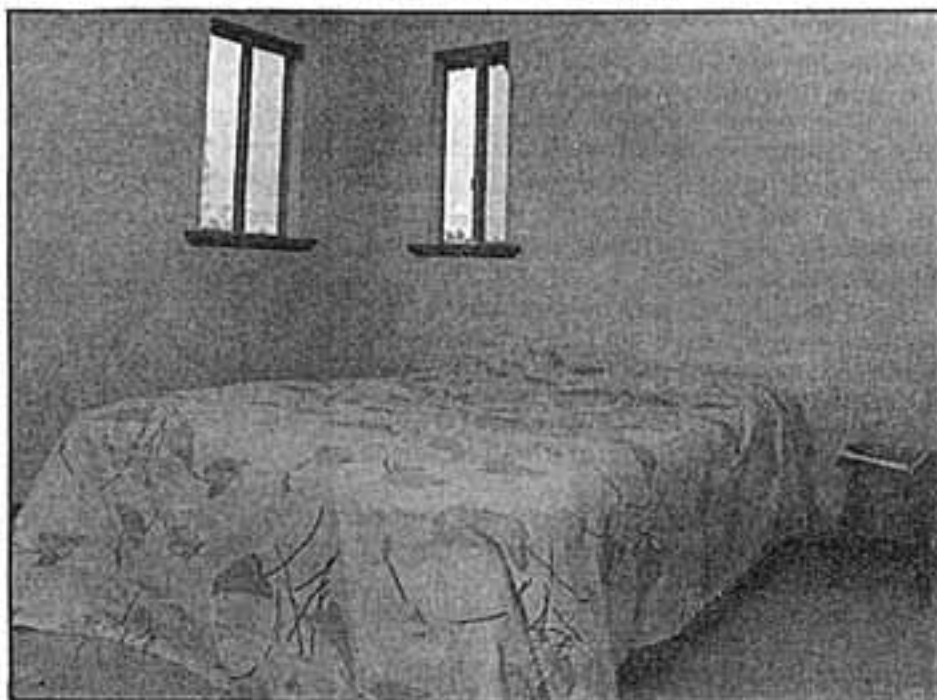
New Homes Liftout

Solar design attracts interest



LEFT: The outside of the house gives an inkling that it has been designed to meet a special need.

RIGHT: The windows are all part of the design to make use of the sun.



RIGHT: These small windows in the master bedroom are part of the design plan.

THERE has been much interest in a three-level cottage at Trigg, not only in its rustic brick and plank construction, but in the way it exploits passive solar benefits.

The steeply-sloping site at the corner of Bailey and Chrysostom Streets looks almost impossible for such a solar concept.

It faces south and west on the corner, has a row of tall trees to the north while the main outlook is down a valley to the east. Setback was critical because the 660sq m block has a narrow frontage of only 13m.

Architects Baverstock and Associates have not only come up with an efficient solar design, but have exploited the trees in the process, some trimmed to let in the low-angle winter sun.

A garden rockery with native trees and shrubs, also wildflowers, is being developed at the front to protect the home from the afternoon sun. Windows, which are mainly to the north, make the most of the winter warmth and, in the process, capture some imaginative outlook to the trunks, limbs and leaf tops of the big eucalypts.

From the upstairs balcony it is like living at tree-top level while taking in the valley vista.

Owners Des and Viv Arrow have lived in the home since January and have been most appreciative of the total comfort indoors, first in the heatwaves of summer and now with the encroaching cold weather.

Initially, it was the cross ventilation that cooled the whole house.