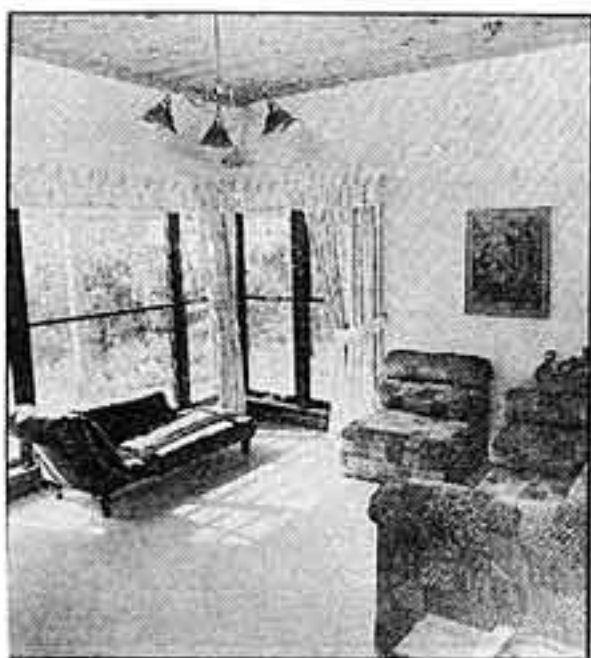


NEW HOMES

Big colonial home takes design for climate award



The house is furnished in keeping with its design.



THE BIG colonial home with studio loft, so carefully tucked in behind big eucalypts high up in a valley, is a winner on two counts.

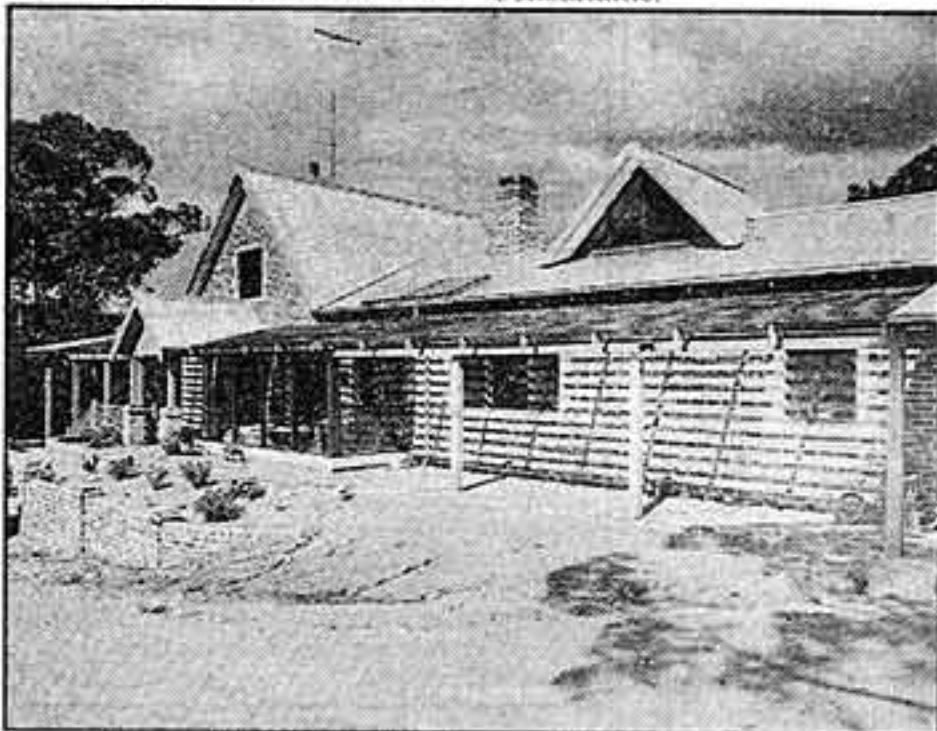
It shared the Design for Climate award in the 1987 Homes of the year with its innovative concept for year-round comfort in the hills.

It is also a winner in the way it

By FRANK PLATELL

blends into the part-bush environment in Glen Forrest, a conscious effort to avoid standing out as an eyesore. Only a sign at the start of a long driveway alerted me to its presence.

It is the creation of architect Gary Baverstock who shared the 1987 award with Hills Building Consultants.



The stylish facade of the award-winning home.

Working to the formula in his Low Energy Building Book, he has designed it to meet specific requirements of owners Mervyn and Jenny Hill.

After the cold comfort of an earlier home, Jenny did a university extension course on passive solar design, and knew basically what she wanted.

After eight months in the home she has gone through her first winter without having to use an electric blanket.

The concept exploits a solarium to the north, a winter heat trap for the living areas that doubles as a children's play area.

Clerestory windows in dormer-style lofts let the winter sun into the middle of the house, and into bedrooms on the south.

It meets the owners' request for a timeless style, with external walls of recycled bricks to achieve an earthy feel. The architect picked the only suitable spot in the valley for the house, where the sun could shine indoors over treetops.

● More next page



Bathroom furnishings are all old world.

NEW HOMES

IT'S A WINNER ON TWO COUNTS

● From page 26

Three springs on the spot did not help, but these were diverted with extensive drainage, sand fill and deep beam footings. Also the brick walls, which are all faced masonry, have been reinforced with steel mesh and rods.

The eclipse pergola with its specially angled louvres is over the solarium to let in the maximum amount of winter warmth, while excluding sunshine in summer.

This pergola extends right across the north elevation, to shade not only the building but the ground in front because the summers are hot in the hills.

The main bedroom has windows to the east, to catch the cool summer breezes at night and to exploit the valley outlook. Trees carefully retained here shade this glazing.

The roof, which is pitched at 50 degrees for the lofts, is of a shiny corrugated metal, chosen for its heat reflective qualities. While a green roof would have merged the home even more into the bush, it is an impractical colour for absorbing heat.

The studio loft, handled much like a mezzanine level, adds much character to the main living areas, giving almost a soaring dimension to main rooms. It introduces the cedar and pine, featured so much indoors.

Cedar planks from the Fremantle wool store have been used for kitchen bench tops, the doors, built-in cupboards, ceilings, spiral stairway and floors. It is always with a clear finish to make the most of the beautiful grains.

In the kitchen the slow-combustion stove for cooking also doubles as a booster unit for the solar hotwater system.

There is a pantry big enough to double as a workroom for preparing food, even to old-fashioned scales for weighing ingredients.

The studio loft is Jenny's retreat, where she can pursue her interests and her art, while still maintaining contact with toddlers downstairs. When the children are allowed upstairs they play in their little "hidey."

The main elevation is in the timeless, old world style, with the simulated quoins to all openings. The lintel with the date, AD 1986, looks so much like a piece of history that you look at it twice, to make sure it is right.

The entrance foyer is under the studio loft, the herring-bone floor structure providing a cosy dimension. Formal sitting and dining areas relate to a brick fireplace which has a slow-combustion heater.

Family living and related country kitchen spaces share the warm and bright light from the solarium. Prominent here in a brick pier is a leadlight with the pattern of a bluebird.



Solid cedar is a feature of the kitchen.

In the master suite, down on another level, the master bedroom has the valley view with creek, where sheep are grazing in paddocks. There is a dressing room with window and a nursery that could be a study.

Furnishings in the owners' bathroom take you back at least a century, where you look for water jug and basin on the cedar

cupboard. But instead it has a flush hand basin with goose-neck tap.

With the two main bedrooms for children, one has been set up as a bunkhouse while the other has a double bed for guests. The children have a more traditional bathroom.

The home is not open for inspection.



The studio loft has a sweeping, cathedral-like ceiling.



The eclipse pergola allows winter sunshine into the solarium.