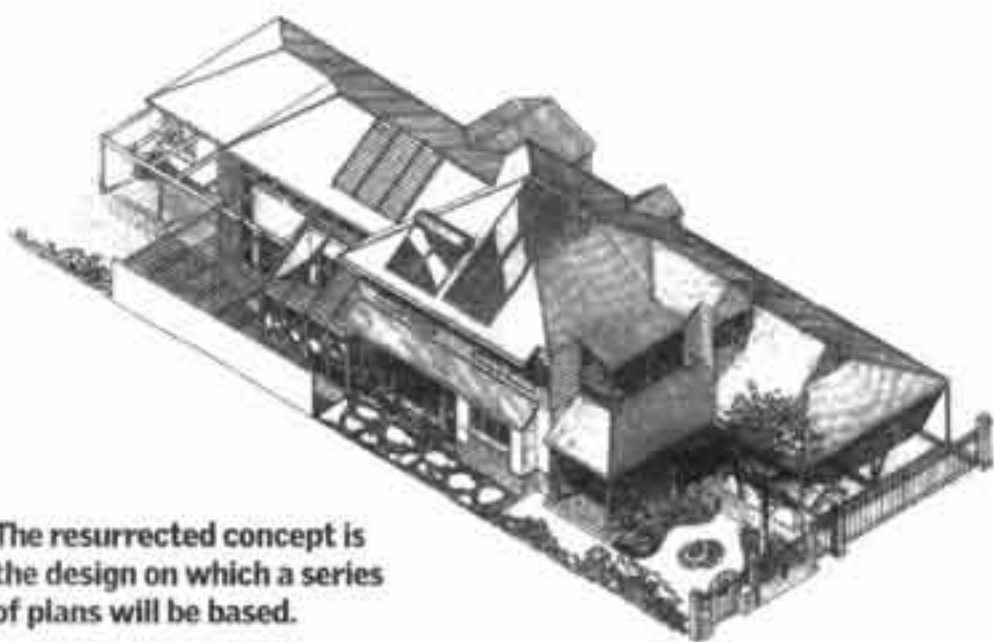


# Custom Built



The resurrected concept is the design on which a series of plans will be based.

## Airing for solar home

### FRANK PLATELL

Solar architect Garry Baverstock has resurrected a mothballed state-of-the-art home that he designed 12 years ago.

At last he can see the market potential for small and medium-site developments.

In particular, it will have an immediate application to the new Greenough Estate, south of Geraldton, and its 800-plus blocks, of which he is co-ordinator. The design is not one that he contemplates repeating endlessly on the estate but is a model for what can be achieved.

All 800 lots have been orientated to maximise solar benefits, with the key solar elevations running down the sides of the blocks. A number will have the favoured north elevation to the back because people tend to screen front windows with curtains during the day for privacy.

"We have endeavoured to integrate privacy and security with the favoured elevations, gaining maximum solar benefits during the day when the home could be unoccupied," he said.

"We have planned for more than 80 per cent of the lots to be perfectly orientated.

"The resurrected concept is the archetypal design on which a series of plans will be based. There will be a range of sizes and accommodation for different families and different budgets."

The two-storey design is what

most people are looking for with small-lot sizes common today.

It has total family living downstairs, the parents' retreat being integrated with their bedroom to the rear on this level.

The open plan has a central kitchen downstairs. It takes in the solarium, a glass-enclosed space that maximises the winter warmth intake and is an important part of the cross-ventilation needed during hot weather.

Time has marched on since the concept was drawn up and its formal living area could now be a home theatre. A veranda has been added for architectural interest to the street elevation.

Because of rising building costs and interest rates, an effort has been made to have multi-purpose bathrooms, each with a dual-access toilet that doubles as a powder room.

Technologically, it will incorporate a number of energy-efficient solar systems such as gas-boosted hot water, Tecto skylights and solar louvres to verandas set at 35deg. for winter sun penetration while blocking out the summer sun.

There will be space for solar/air collectors and provision on the roof for photovoltaic power cells, if affordable. All these can be added subsequently when funds become available.

The home has been designed for a mature family, acknowledging that children are now staying home longer.



UPPER LEVEL