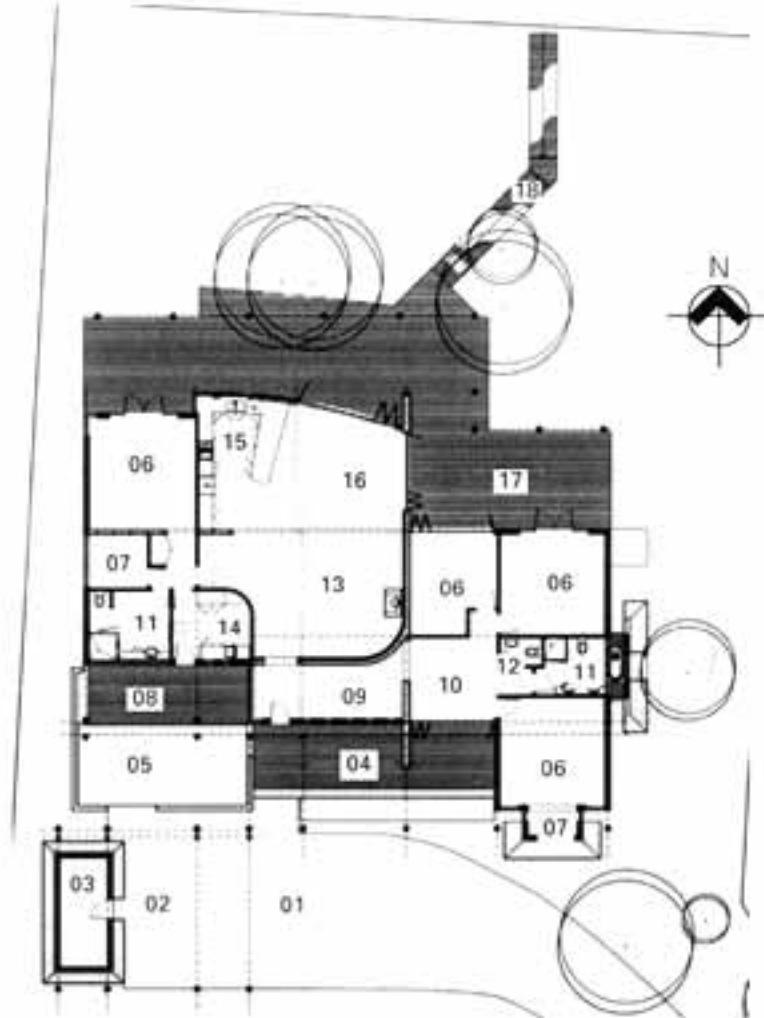


**SOUTH WEST BEACH HOUSE**  
**ARCHITECTS ECOTECT-ARCHITECTS**

# ECOLOGICALLY SUSTAINABLE DEVELOPMENT AWARD

**PROJECT ARCHITECT** JAMES SHAW **DESIGN ARCHITECT** GARRY BAVERSTOCK **OTHER PROJECT TEAM MEMBERS** DEAN ROBINSON AND ROD JURICH **STRUCTURAL CONSULTANT** MAROCCHI ENGINEERING GROUP  
**INTERIOR DESIGNER** MCPHEE JACQUIE INTERIORS **BUILDER** DOWN SOUTH BUILDING CO



- |                      |                     |                   |
|----------------------|---------------------|-------------------|
| 01 Entrance drive    | 07 WIR              | 13 Living         |
| 02 Double carport    | 08 Service verandah | 14 Laundry        |
| 03 Store             | 09 Entrance lobby   | 15 Kitchen        |
| 04 Entrance verandah | 10 Breezeway        | 16 Dining         |
| 05 Courtyard         | 11 Bathroom         | 17 Solar verandah |
| 06 Bedroom           | 12 Toilet           | 18 Ramp           |

## Project description

In designing this beach house, the challenge was to harmonise with the natural setting of the beach front at Eagle Bay which would result in an ecologically sustainable approach. The objective was to create a balance between the beautiful eucalypt and melaleuca forest which flows virtually to the beach with its rocky outcrops and man made structure. If not tastefully handled it could have been a visual and environmental blot on the landscape.

It is clearly a beach home worthy of any up-market area in the world designed for a temperate climate, such as California. The site made the passive solar design easy as this stretch of coast line is unusual in Western Australia in that it faces north.

The style could be described as a blend of modernist and organic architecture. Clearly, it is a 21st century expression, yet integrated in, arguably, one of the most beautiful locations in the world.

## Jury comments

The jury has decided on an Architecture Award for the architects of this house as it represents a fully mature example of excellent, energy-efficient planning, delightful spaces and aesthetically pleasing details and finish, including incorporation of the appropriate ESD principles.

