

Support and Thanks

In reaching the stage we are at now, many people have contributed ideas, time and enthusiasm. Numerous people and various organisations have provided positive contributions to the planning and vision of the project.

The City of Melville would like to acknowledge the following organisations that have contributed to the project:

- Rotary Club of Melville (Inc.)
- Western Power
- Australian Centre of Cooperative Research for Renewable Power
- Alternate Energy Development Board
- WA Planning Commission
- Baverstock Murphy & Associates Architects
- Murdoch University – Energy Research Institute
- Murdoch University – Environmental Technology Centre
- Centenary of Federation Fund Program

Other organisations and individuals have also greatly assisted in the development of the project.

- The Friends of Blue Gum Lake
- The Friends of Wireless Hill
- Greening Leeming
- Palmyra Community Association
- Murdoch Branch of the Wildflower Society
- Wetlands Conservation Society
- Local Schools



— City of —
Melville

Civic Centre Almondbury Road, Ardross, 6153 Western Australia

Tel (08) 9364 0666 Fax (08) 9364 0285

PineyLakes



Welcome

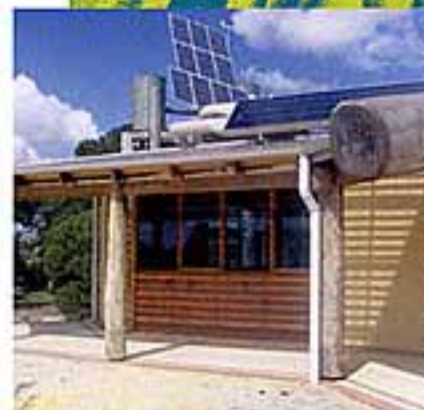
to the Piney Lakes Environmental Education Centre

Piney Lakes is a vibrant centre of learning, incorporating the natural environment and the latest technology to promote global sustainability.

By visiting our centre you will be able to explore a future built on the sustainable use of the earth's resources, including: renewable energy technologies, passive solar building design, biological waste treatment systems and energy conservation, all of which are embodied in this innovative building.

The City of Melville is leading the way in our community as a local government that is actively involved in helping communities achieve sustainability. The construction of the Piney Lakes Environmental Education Centre reaffirms the City of Melville's global commitment to living within the carrying capacity of the Earth's ecosystems.

Located in 68h of tranquil bushland, the centre features two spacious function rooms, an outdoor amphitheatre and observation deck, a laboratory workspace, kitchen facilities and conveniently located parking with access for the disabled



Opening Hours

The centre is open to the public 6 days per week
10am – 2.30pm
Monday to Saturday
or by appointment

And is available for

- School excursions @ \$2.50 per student (1-2 hours duration)
- Functions and seminars (\$35.00 per hour per room)
- Full range of catering services offered

Bookings/enquiries
Phone: 9364 0790
Mobile: 0403 463 969

LOCATION :

Entrance off Leach Highway, between Murdoch Drive and Riseley Street Booragoon

